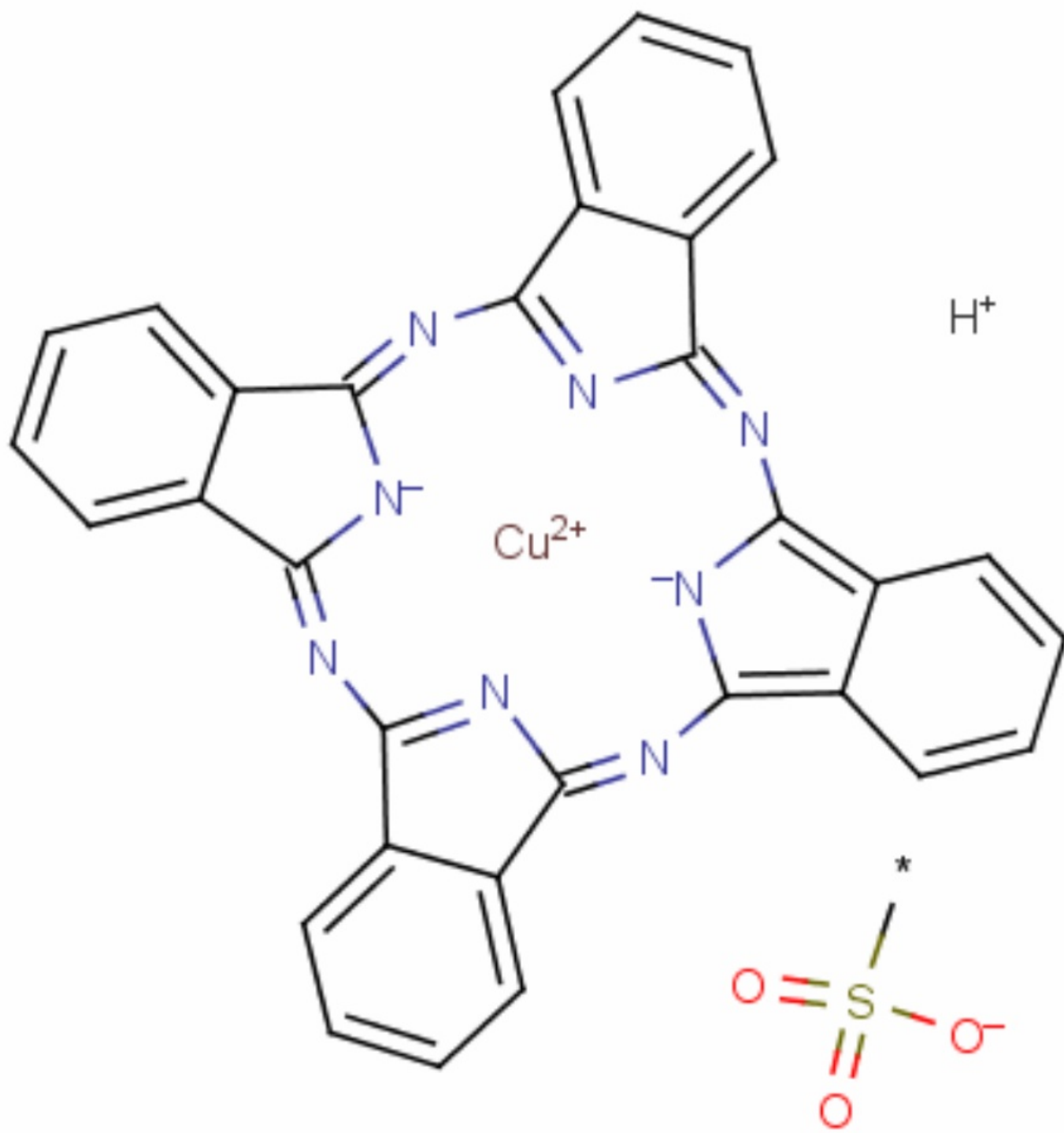


# Mono sulphonated CPC



## Mono sulphonated CPC

CAS no. CAS NO : 28901-96-4

EC NO : 249-300-5

Molecular Formula:  $\text{C}_{32}\text{H}_{15}\text{CuN}_8\text{So}_3\text{H}$

Application: Partially sulphonated CPC is used as an additive to achieve deflocculation properties and solvent resistance in inks, greenish blue toner for 15:3, 15:4.

Through accurate and extensive research, we can deliver precise degrees of sulphonation within the range of  $\pm 0.05$  and required physical parameters. We have been able to achieve the tonal requirement and low Ph as per customer demand.

Physical Form: Wet Cake (25% to 40% Solid Content)

Physical Form: Wet Cake (35 % to 40% Solid Content)

Wet cake appearance: greenish blue cake